

Long Beach Yacht Club Sailing Foundation

The Catalina-37 fleet, donated by Frank Butler, the president of Catalina Yachts, has been used for Congressional Cup, Mayor's Cup, Wet Wednesdays Summer Series and Community Outreach for more than a decade. The Long Beach Yacht Club Sailing Foundation is a 501 (c) (3) public benefit corporation whose mission is "Facilitating opportunities to experience sailing in Long Beach." This nonprofit organization was formed in 1991 to own, manage and maintain the "37s."

As a part of its mission, the Foundation undertakes activities that promote national and international amateur sailing, maritime education and youth sailing opportunities. In the process you will find the Catalina-37 fleet at the core of all the work the Foundation does. The Foundation's focus is to be a part of the "future" of amateur sailing competition.

This Mayor's Cup regatta, you will see the Catalina-37s in the hands of some of the best sailors and skippers in the world. In the months following Mayor's Cup, you'll be able to see the "37s" being skippered and crewed by both young people and older "youth" from all over Long Beach and points beyond. In promoting youth sailing, the Foundation has been able to introduce area teenagers, who may never have been near a boat, to the



Foundation President David Murray (center) with a Mayor's Cup crew before the 2006 competition.

excitement of competitive sailing as they crew on Wednesday evening races throughout the summer. Maybe one day, one of these newly minted sailors will become a skipper or a crewmember competing in the America's Cup races. Almost every Mayor's Cup skipper who is here this week has a similar story to tell.

To provide the fairest possible racing, the Foundation maintains the boats to an identical standard in all performance-related areas: weight, equipment, rig tuning and sails. This is possible through the tremendous efforts of dedicated volunteers, contractors and supporters. The Foundation is honored and grateful for the wonderful partners that are key to helping fulfill its mission. Long Beach Yacht Club Sailing Foundation gratefully acknowledges the support of Club 100 Members whose gen-

erosity helps to fulfill the Foundation's Mission of facilitating opportunities for all to experience sailing in Long Beach. Special thanks go to US Sailing Center for being our youth outreach partner, Bahia Marine and Hardware for maintaining the fleet, Marina Shipyard for always being there to do the heavy lifting and hull work.

The Foundation is delighted to support Mayor's Cup and Long Beach by providing another season of great racing for sailors of all abilities and backgrounds.



(above) In preparation for Transpac, Roy Disney held the crew selection trials in Long Beach on 4 of the Catalina-37s chartered from the LBVC Sailing Foundation. This crew of 15 will race aboard Disney's *Morning Light* at TP-52. *Morning Light* is also the title of the sailing documentary being filmed by Roy Disney to be released in Spring 2008.

Long Beach Yacht Club Sailing Foundation's Community Outreach Program is in full swing during Wet Wednesday sailing competitions held at Long Beach Yacht Club. The Community Outreach Catalina-37 boat with high school boys and girls from Artesia High School (left, top and bottom) took first place overall in their division to beat out the experienced sailors on the other 37s.



2007 MAYOR'S CUP WOMEN'S GRADE 2 MATCH RACING EVENT JULY 18 - 21, 2007 LONG BEACH, CA IDENTICAL CATALINA-37S IN RAINBOW HARBOR

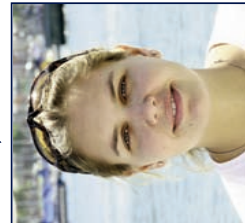
Top-Ranked Women Skippers Compete in Mayor's Cup



Charlie Arms is from San Diego, CA and a member of Vallejo Yacht Club and a competition member of Southwestern Yacht Club. She is also the Director of Sailing for the California Maritime Academy in Vallejo, CA. She is currently 69th in the ISAF World Women's Match Race Rankings. She won the 2005 Sundance Cup and finished fifth in the 2006 US Women's Match Race Championship and Mayor's Cup.



Liz Baylis is from San Rafael, California, and a member of San Francisco and Richmond Yacht Clubs. A longtime offshore sailor, Liz began match racing six years ago and has since trophied in more than a dozen events, including a first place in the 2003 US Women's Match Race Championship. Currently in the top 20 in the International Sailing Federation (ISAF) Women's Match Race Rankings, her recent victory at the Rolex Women's Match in St. Petersburg, Florida has catapulted her into a highly visible position.



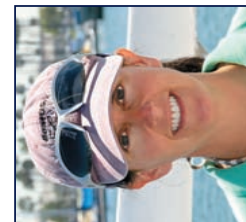
Caroline Béjar is from Niterói, Brazil and is a six-time National Champion in the Laser Radial. She finished first in the 2005 Nivea Sun Match Cup and 2005 UBS Challenge Salvador - Bahia, and second in the 2004 Nivea Sun Match Cup. She finished third in the 2006 ISAF Nations Cup Regional Final Qualifier and 2006 Match Race Brasil. In 2003 she finished fourth in the Pan Am Games Santo Domingo and sixth in the 2006 Mayor's Cup.



Delphine Casas is a member of Le Yachting Club de la Pointe Rouge in Marseille, France. Just 18 years old, Delphine has already made a name for herself in several Grade 3 and 4 events, including a recent second place finish in the Punta Lagoa Women's Match Race in Vigo, Spain. Likened to a 'French Ellen McArthur' by the European media, Delphine stands at 19th place in the International Sailing Federation (ISAF) Women's Match Race Rankings after just seven events.



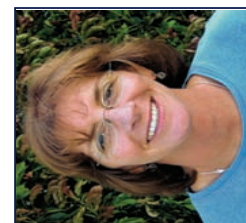
Sandy Hayes is from Scituate, Massachusetts. She has been active in international match racing since 2002 and has been ranked in the top twenty of the International Sailing Federation (ISAF) Women's Match Race Rankings since 2004 (currently 21st). In 2006 she finished first in the Match Race Brasil and the Rolex Women's Match Race. She finished second in the 2005 Mayor's Cup and third in the 2006 Mayor's Cup.



Katy Lovell is from New Orleans, Louisiana and is currently ranked 23rd in the International Sailing Federation (ISAF) Women's Match Race Rankings. She finished second in the 2006 and 2005 US Women's Match Race Championship. She finished third in the 2005 Mayor's Cup and fifth in the 2006 Rolex Osprey Cup and Santa Maria Cup.



Katie Spithill is from Sydney, Australia, and a member of the Royal Prince Alfred Yacht Club. She is currently 6th in the ISAF World Women's Match Race Rankings. She finished first in the 2006 New Zealand Women's Match Race Championship. She finished second in the 2006 Australian Women's Match Race National, 2006 Harken Women's Match Racing Championships and 2006 Mayor's Cup.



Claudia Wainer represents host Long Beach Yacht Club, and the City of Long Beach, California. A relative newcomer to match racing and currently unranked by the International Sailing Federation, Claudia nonetheless placed second in the first match race of her new campaign: the March 2007 Sundance Cup. With 25 years of west coast racing, Claudia's knowledge of local waters and conditions may prove an advantage over the field of higher ranked, international competitors at the Mayor's Cup.



PRESENTED BY:
St. Mary Medical Center
 CHW

OPERATED BY:
SEA FESTIVAL
 LONG BEACH

SPONSORED BY:
THE PORT OF LONG BEACH
 Your Environmentally Friendly Port

GLADSTONE'S
 Long Beach Yacht Club

2007 MAYOR'S CUP
 PLANNING COMMITTEE:



The Best Seat in the House is at the Pier

You don't have to be on a boat to see the action up close. The City of Long Beach Marine Department will have bleachers at the end of the Belmont Pier (off Ocean Blvd at Grand Ave.) to provide some of the best seats in the house for watching the race.

The racing begins each day, **July 18 - 21, at around 11 a.m. until about 4 p.m.** when the boats return to Rainbow Harbor. Great commentary explaining the action is available for spectator enjoyment on the final day, Saturday, July 21.

Competitors Look To America's Cup For Pointers

By Betsy Crowfoot

All eyes were on Valencia, Spain, where Emirates Team New Zealand's challenge for the America's Cup (AC) – the most sought-after trophy in yacht racing – against the defending champion, Société Nautique de Genève's, Alinghi, took place just weeks ago.

Six-thousand miles away, a similar contest waits: the Long Beach Mayor's Cup presented by St. Mary Medical Center – a Grade Two all-women match race regatta.

And although these boats are only 37-feet long, as compared to AC designs that stretch 80-feet, and are raced with a team of just seven, while AC teams have an additional ten crew – the two events bear many of the same challenges.

Both are match races: contested in an elegant duel between two boats, under precise and tricky rules. And with this in mind, contestants in this year's Mayor's Cup kept a keen eye on the AC.

"I watched every race of the America's Cup and have reviewed and analyzed every pre-start a million times!" admitted Sandy Hayes of Scituate, Mass., who traveled to Valencia to watch the first round-robins. Hayes will return to Long Beach for her third attempt at the Mayor's Cup July 18 through 21, 2007.

New Orleans' Katy Lovell said, "I watched the matches live on the Versus Channel every morning," referring to televised and internet coverage of the AC. "On just about every boat I know some of the racers, so that makes it more fun to watch," she added, saying she especially liked to tune in for the pre-start.

Fleet racing, which most recreational sailors compete in, is a battle against time and many opponents – often different sizes and models of boats as well.

The exciting game of match racing, however, pits just two boats – of equal or similar design – against each other. And the competition begins in the pre-start: 10 minutes before the race, when a rigidly-structured sequence begins; where competitors have just two-minutes to enter the arena. From then on, the tactical cat-and-mouse hunt begins and continues around the windward-leeward course.

As Mayor's Cup entrant Claudia Wainer explained, "You use maneuvers to bait your competitor into making a mistake and earning a penalty, and tactical maneuvers to get the lead, and keep it, in order to win the race."



The proud 2006 Mayor's Cup winning crew.

It's this thrill that has lured these women from divergent backgrounds – including a virologist, gastroenterologist, family therapist, marine biologist, and antiques importer – to the Mayor's Cup each year.

"Match racing is exciting!" exclaimed Liz Baylis, Executive Director of the Women's International Match Racing Association. "The pre-start maneuvering is fun, exciting, challenging, physical, and cerebral all in one." Baylis, who will sail in her first Mayor's Cup this year, competed in the 2000 Louis Vuitton Cup and says she would, "love to have the opportunity to go back."

The America's Cup is the pinnacle of racing for sailors, and the Mayor's Cup is a training ground and stepping stone for many. But for some Mayor's Cup racers, the 2007 AC had an added appeal. Brazilian Caroline Bejar's crew member Andrea Grae is married to Luna Rossa Challenge tactician Torben Grae; while Delphine Casas and her Team MisStral from France were rooting for Areva Challenge with friends Sébastien Col and Christophe Andre aboard.

And Australian Katie Spithill, last year's first-runner-up in the Mayor's Cup, found herself in Valencia for nearly four months with her loyalty divided. "My boyfriend is working with United Internet Team Germany. Also my brother is the helmsman for Luna Rossa, the Italian Syndicate, so I have been following both teams closely and have been lucky enough to be out on the water for some of the racing."

Spithill added, "After being so close to the action this time around I would have loved to be involved in an America's Cup campaign. I think to just be part of a team would be amazing and a big learning curve."

Whether they have goals to compete in the AC one day, or just enjoy "mixing it up" as Mayor's Cup returning skipper Charlie Arms said, the recent interest in the AC has been a boon for the racers. "The America's Cup is currently the highest level you can reach in match racing, so it will always be something to aspire to," declared Baylis.

The Mayor's Cup will begin July 18 with registration and practice, followed by three days of double-round-robin match racing in a fleet of identical Catalina-37s. Organized by Long Beach Yacht Club and the Long Beach Yacht Club Sailing Foundation, the Mayor's Cup is presented by St. Mary Medical Center of Long Beach in conjunction with the Port of Long Beach, and operated by the Charter Communications Long Beach Sea Festival.

Keep Your Eye on the Race Committee

THEY'RE IN CHARGE OF THE RACING

Watching the racing is fun, but also watching the Race Committee will add to the fun - you'll have a preview of what to expect.

The Race Committee will be on the Race Committee boat anchored just off the pier and flying an RC flag. The Principal Race Officer (PRO) is aboard the Race Committee boat, along with the skilled members of his committee. They are in charge of the racing, with the exception of umpires who follow each boat and mete out swift justice for any infractions of racing rules.

The Race Committee will start the racing only after they have decided there is enough wind, the wind direction is stable enough for fair competition, and all the racing marks are in their proper locations. Through a sequence of sound signals and flags, the Race Committee communicates with the race boats telling them when to prepare for their respective starts.

Here's what to watch for, keeping in mind that - because this is match racing and there are 10 boats - there will be a sequence of 5 starts with 2 boats in each start:

For the First Start in a Flight of Five Starts

◆ **Start minus 11 minutes:** 2 sound signals telling the skippers that racing is about to begin;



"F" Flag

◆ **Start minus 10 minutes:** the "F" flag is hoisted along with 1 sound signal;

◆ **Start minus 06 minutes:** the "F" flag is lowered;

◆ **Start minus 05 minutes:** a numerical pennant is hoisted denoting the pair racing (in this case, Pennant "1" for the first pair of racers);



Pennant 1

◆ **Start minus 04 minutes:** the preparatory "P" flag is hoisted along with 1 sound signal, and the first 2 boats enter the starting



"P" Flag

area and begin their maneuvering in an attempt to gain the most advantageous start (the boat entering from the left side of the starting line has a blue flag on its backstay, and the boat entering from the right side has a yellow flag on its backstay);

◆ **Start at 0 minutes:** all flags come down and the Starting sound signal is given.

If a boat is over the starting line early, the Race Committee displays a blue or yellow flag denoting the boat, along with 1 sound signal.

For the Following Four Starts in the Flight

The sequence repeats for each subsequent pair of boats at the Start Minus 05 Minute point, beginning with Pennant "2" and continuing with Pennants "3", "4" and "5" until all boats have been started for the flight.



Pennant 2



Pennant 3



Pennant 4



Pennant 5

Other Flags

If the racing must be postponed, but is likely to resume later in the day, the Postponement Flag is hoisted.



Postponement Flag



Abandonment Flag

And if the race, or racing, must be abandoned, the Abandonment Flag is hoisted.